

Kit Lcd Touch 10.1 + Controladora raspberry 1024x600

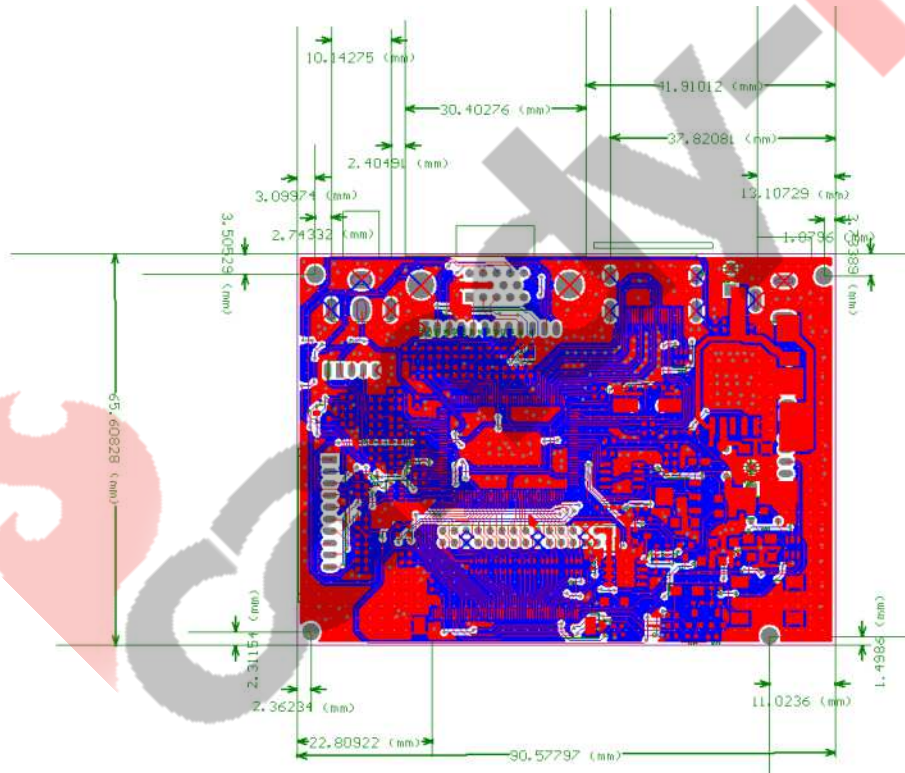
AV + VGA + HDMI, two AV input. Screen with a new 10.1-inch high-definition digital screen, VGA support 1024 * 768 or higher resolution. Applicable to industrial products or DIY car computer and other uses!

Kit Description:

- * Operating voltage: 12V
- * Signal input: 2 AV + VGA + HDMI
- * System standard: PAL / NTSC
- * VGA input: 1024 * 600 physical resolution, support resolution range can be 1024 * 600 --- 1600 × 1200 between the arbitrary adjustment.
- * AV1 video input (can link DVD device or front camera)
- * AV2 video input (to the car automatically switch to the camera screen)
- * Plug and Play function: support
- * OSD language: multiple languages
- * Control mode: multi-function OSD operation or potential to adjust the brightness and color
- * Performance characteristics: the use of mature programs, clear display
- * Scope: used in video intercom, automotive computers, instrumentation, industrial control, medical equipment, ** equipment, portable display devices and other electronic fields.

A set includes: LCD screen + driver board + keypad + remote control + VGA head + wiring

+ Touch screen + touch controller + USB cable, another gift pen



The driver board can

1,1 way VGA signal input

2,2-way AV signal input

3 1-way HDMI signal input, and the IC supports HDMI1.2

4 1-way reversing signal input

5, support wide voltage input, and can, 4.5V-20V between the normal work,

6, the standard backlight 6PIN, interface, can be an external high voltage board

7, the driver board integrated LCD screen LED backlight drive board,

8, the standard LVDS signal output, can support single 6, single 8, double 6, double 8 standard LVDS signal LCD screen, but only support the screen power supply for the 3.3V LCD screen

9, the standard keypad interface, and supports two-color LED indicator

10, support TTL signal output,

Can support AT070TN92,

AT065TN14

AT080TN52

AT090TN12

AT090TN10

AT070TN90

AT070TN93

AT070TN94, etc., universal 50PIN interface TTL LCD screen

With my company PCB800602 adapter board

Can effectively support, Han Choi, AUO, Tianma, BOE, China and other universal 60PIN definition TTL interface

For example, HSD070IDW1, A070VW04, A080SN01, A104SN01, HSD084IDW1, etc.,

11, with the company number PCB800100 or PCB800185 LCD adapter board, can support the following LCD screen

EJ070NA01-1024X600 Resolution

EJ080NA04B-1024X768 resolution

ZJ070NA01, model of the universal 40PIN high score LCD screen

12, with PCB800100, can also support 4.3,5,6,7 inch, 40PIN common screen, the definition see AT0543TN24V, 1

13, the drive board maximum output display resolution, 1920X1080 over, 1440X900 display resolution, the need to look at the work of the IC, increase the heat sink to reduce the IC's operating temperature)

14 IC, VGA part can be directly input YPBPR signal, through the program to achieve

15, the driver board can increase the remote control function (need to achieve through software)

16, the drive board can automatically detect and display the relevant input voltage information ----- Note that this feature is a custom function, you need to contact the company's technical department

17, the drive board can support automatic detection signal switch function, - this function is a custom function

18, the drive board can be added BNC interface --- need to customize

19, support reversing control, and display AV2, the reverse voltage to support the voltage input within 50V

20, the drive plate positioning hole for the four,

2 interface function description

位号	功能说明	备注
RCA1	AV input	
TP1	AV Signal input and reverse voltage input	
J4	VGA input	
DB15	VGA input	
HDMI	HDMI input	HDMI 标准为 1.1
DCIN	Power input	
J3	Power input	
J1	External high pressure plate	
J7	LED backlit	
CON1	TTL-50PIN signal output	
CN1	LVDS signal output	
J6	Button, remote control, LED indicator interface	

3, VGA mode

640X480	support
800X600	support
1024X768	support
1024X600	support
1280X1024	support
1366X768	support
1440X900	support
.....
1920X1080	support
Need to support other resolutions, can be increased later	

4, AV simulation

NTSC	support
PAL	support

7 interface function details

7.1

J6 keypad, remote control input interface

1	5V	Remote control power supply, in fact, 3.3V
2	GND	To the ground
3	IR	Remote input
4	POWER	Switch function
5	MENU	Menu display function
6	+	plus

7	-	Subtraction
8	SOURCE	Signal source conversion
9	LED-R	LED indicator
10	LED-G	LED indicator

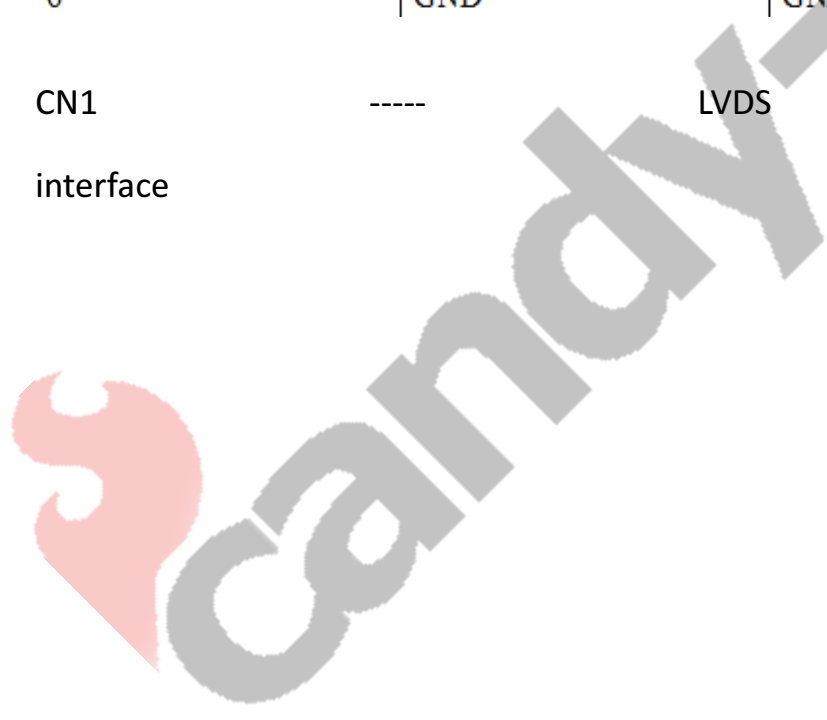
DB15 - VGA signal input interface

1	D-15	Standard interface
---	------	--------------------

J1 high voltage board interface

1	+12V	Positive power input
2	+12V	Positive power input
3	EN	High voltage switch signal
4	空	空
5	GND	GND
6	GND	GND

CN1 interface ----- LVDS screen



1	VCC	LCD screen power supply
2	VCC	LCD screen power supply
3	VCC	LCD screen power supply
4	GND	To the ground
5	GND	To the ground
6	GND	To the ground
7	LAX0+	LVDS signal
8	LAX0-	LVDS signal
9	LAX1+	LVDS signal
10	LAX1-	LVDS signal
11	LAX2+	LVDS signal
12	LAX2-	LVDS signal
13	GND	
14	GND	
15	LACK+	LVDS signal
16	LACK-	LVDS signal
17	LAX3+	LVDS signal
18	LAX3-	LVDS signal
19	LBX0+	LVDS signal
20	LBX0-	LVDS signal
21	LBX1+	LVDS signal
22	LBX1-	LVDS signal

J3-DCIN power connector

1	+12V	Positive power input
2	+12V	Positive power input
3	GND	GND
4	GND	GND

HDMI interface

1	HDMI standard interface	Standard wire is available
---	-------------------------	----------------------------

J5, AV signal and reversing control power interface

1	ACC	Reversing voltage input, 12V input after forced to AV2
2	AV1	AV1 input
3	GND	GND
4	AV2	AV2 input
5	GND	GND

J4-VGA IN

1	GND	GND
2	V	V
3	H	H
4	GND	GND
5	R	R
6	GND	To the ground
7	G	G
8	GND	To the ground
9	B	B
10	GND	To the ground
11	SDA	Upgrade with
12	SCL	Upgrade with

CON1,

interface

definition

FPC Connector is used for the module electronics interface. The recommended model is FH12A-50S-0.5SH manufactured by Hirose.

Pin No.	Symbol	I/O	Function	Remark
1	V _{LED+}	P	Power for LED backlight (Anode)	
2	V _{LED+}	P	Power for LED backlight (Anode)	
3	V _{LED-}	P	Power for LED backlight (Cathode)	
4	V _{LED-}	P	Power for LED backlight (Cathode)	
5	GND	P	Power ground	
6	V _{COM}	I	Common voltage	
7	DV _{DD}	P	Power for Digital Circuit	
8	MODE	I	DE/SYNC mode select	Note 1
9	DE	I	Data Input Enable	
10	VS	I	Vertical Sync Input	
11	HS	I	Horizontal Sync Input	
12	B7	I	Blue data(MSB)	
13	B6	I	Blue data	
14	B5	I	Blue data	
15	B4	I	Blue data	
16	B3	I	Blue data	
17	B2	I	Blue data	
18	B1	I	Blue data	Note 2
19	B0	I	Blue data(LSB)	Note 2
20	G7	I	Green data(MSB)	
21	G6	I	Green data	
22	G5	I	Green data	
23	G4	I	Green data	
24	G3	I	Green data	
25	G2	I	Green data	

8 transportation, storage, use requirements

1, do not stress and bend deformation

2, anti-static and water

3, relative humidity, less than 80%

4, the use of temperature -1 degrees - +60 degrees

5, the use of humidity 0 - +40 degrees

The driver board can use the remote control picture (optional)

